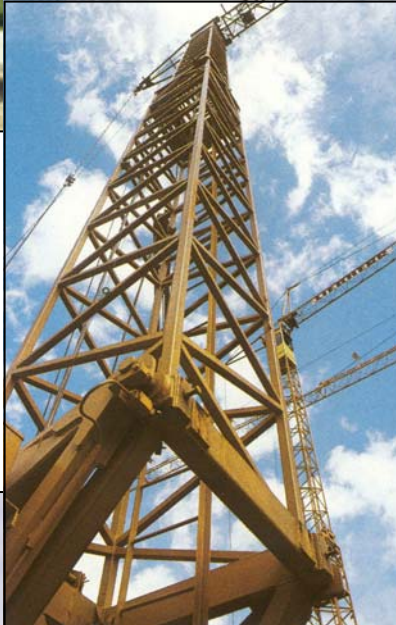




3610 Cedardale Road
Suite D
Mount Vernon, WA 98274



The Crane Specialists



Rental | Sales
Toll Free: 866-708-5001
Phone: 360-848-8491
Fax: 360-424-8566

Parts | Service
Toll Free: 866-508-2001
Phone: 253-572-2915
Fax: 253-572-2915



Locations:
Mount Vernon, WA / Tacoma, WA / Vancouver, WA
Atlanta, GA

Rental | Sales
Toll Free: 866-708-5001
Phone: 360-848-8491
Fax: 360-424-8566

Authorized Distributor for:

DEMAG

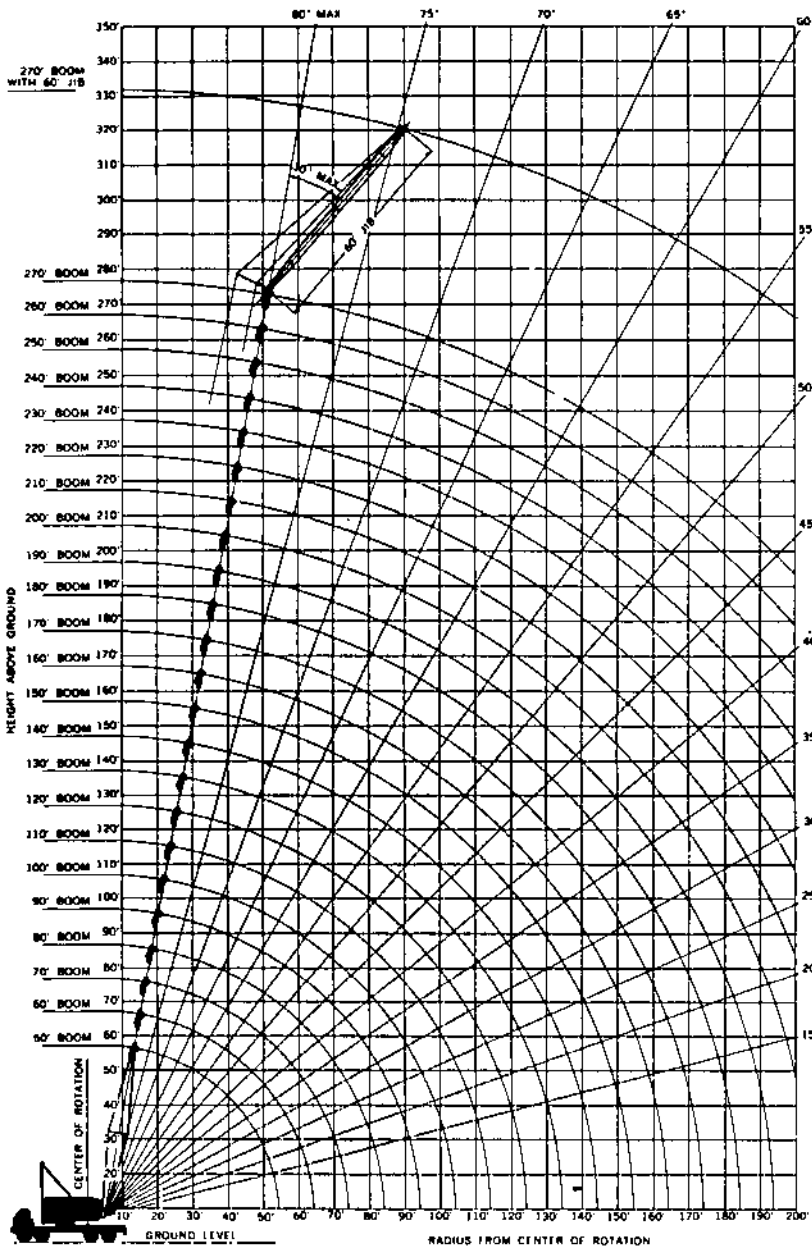


LIEBHERR

Parts | Service
Toll Free: 866-508-2001
Phone: 253-572-2914
Fax: 253-572-2915

P&H® 9125-TC

140-ton Truck Crane 270' boom, 60' jib



2.2' (APPROX)
2, 3 & 5 PARTS
HOIST LINE



5.2' (APPROX)
2 & 3 PARTS
HOIST LINE



3.3' 39\"/>

Your versatile P & H 9125-TC adapts readily to your special operating needs through a choice of counterweights and boom tips. This brochure contains these crane rating charts:

Heavy and Light Duty Tapered Tip Boom:

1. 41,000 lbs. counterweight — on outriggers
50 to 250 foot boom lengths
2. 41,000 lbs. counterweight — on rubber
50 to 130 foot boom lengths
3. 41,000 lbs. counterweight plus 14,000 lbs.
front bumper counterweight — special
over-rear on rubber — for "tilt-up" work
50 to 100 foot boom lengths
4. 62,000 lbs. counterweight — on outriggers
50 to 270 foot boom lengths
5. 62,000 lbs. counterweight plus 14,000 lbs.
front bumper counterweight — over-rear
only — on outriggers — for heavy rigging
50 to 180 foot boom lengths

Special Container Tip Boom:

6. 62,000 lbs. counterweight — on outriggers
120 to 160 foot boom lengths

Hammerhead Tip Boom:

7. 41,000 lbs. counterweight — on outriggers
40 to 180 foot boom lengths
8. 62,000 lbs. counterweight — on outriggers
40 to 180 foot boom lengths
9. 41,000 lbs. counterweight — on rubber
40 to 130 foot boom lengths

Jib Ratings

All boom combinations except container

**Standard
69" wide x 69" deep
Boom**

**crane lifting capacities
working ranges**

P&H 9125-TC 140-ton Truck Crane 270' boom, 60' jib

PCSA CLASS 12-613

1 rated crane loads in pounds — main boom (69" w. x 69" d.) in over side

Oper. Rtd. Ft.	50 Ft. Boom			60 Ft. Boom			70 Ft. Boom			80 Ft. Boom			90 Ft. Boom			100 Ft. Boom			110 Ft. Boom			120 Ft. Boom				
	Angle	Boom Pt. El.	Rating Lbs.	Angle	Boom Pt. El.	Rating Lbs.	Angle	Boom Pt. El.	Rating Lbs.	Angle	Boom Pt. El.	Rating Lbs.	Angle	Boom Pt. El.	Rating Lbs.	Angle	Boom Pt. El.	Rating Lbs.	Angle	Boom Pt. El.	Rating Lbs.	Angle	Boom Pt. El.	Rating Lbs.		
12	81	58.0	280,000																							
15	78	57.5	210,500	80	67.6	196,000	RATINGS ABOVE HEAVY LINE ARE LIMITED BY FACTORS OTHER THAN STABILITY.										RATINGS AT 20 FT. OPERATING RADIUS OR LESS REQUIRES THE USE OF 25 FT. TIP SECTION WITH 6 SHEAVES.									
20	72	56.2	165,200	75	66.6	164,900	77	78.8	164,600																	
25	66	54.3	127,000	70	65.1	127,300	73	75.6	127,300	75	85.8	127,200	77	96.3	127,100	78	106.6	127,000								
30	60	52.0	94,200	65	63.1	94,500	69	74.1	94,400	71	84.2	94,300	73	94.6	94,100	75	104.2	94,000	77	116.7	93,800	78	126.0	93,600		
35	53	48.6	74,500	59	60.1	74,800	64	71.6	74,700	67	82.2	74,600	70	93.1	74,400	72	103.8	74,200	74	114.4	74,000	75	124.4	73,800		
40	45	44.0	61,300	54	57.1	61,600	59	68.6	61,400	64	80.6	61,300	67	91.5	61,100	69	102.1	60,900	71	112.6	60,700	73	123.4	60,400		
45	36	37.0	51,800	47	52.5	52,200	55	66.0	52,000	59	77.2	51,900	63	88.8	51,700	66	100.1	51,500	68	110.6	51,300	70	121.4	51,100		
50	24	28.0	44,600	40	48.2	44,900	49	61.4	44,700	55	74.1	44,600	60	86.6	44,400	63	97.7	44,200	65	108.3	44,000	68	120.0	43,700		
60				22	30.9	34,900	37	50.6	34,600	48	66.1	34,500	52	79.6	34,300	56	91.5	34,100	60	104.0	33,800	62	114.6	33,600		
70							20	33.4	28,000	35	54.4	27,800	43	70.0	27,600	49	84.1	27,500	53	96.4	27,500	57	109.2	27,500		
80										19	34.4	23,600	32	58.0	23,400	41	74.1	23,100	47	89.1	22,900	51	101.8	22,600		
90													17	35.8	19,800	31	59.9	19,500	39	77.7	19,300	44	93.3	18,900		
100																17	37.5	16,600	30	63.4	16,400	37	80.6	16,100		
110																			16	38.8	14,200	28	66.1	13,800		
120																						15	41.1	12,000		
130																										
140																										
150																										
160	WARNING:										WARNING: MAXIMUM RATING															
170	WHEN BOOM IS EQUIPPED WITH JIB, MAIN HOOK RATING MUST BE REDUCED TO COMPENSATE FOR JIB ATTACHMENT WEIGHT.										FOR 35 FT. 3 SHEAVE TIP IS 150,000 LBS.															
180																										
190	JIB LENGTH		20 FT.	30 FT.	40 FT.	50 FT.	60 FT.																			
200	DEDUCT — LBS.		1,500	1,500	2,000	2,500	3,000																			

P&H 9125-TC 140-ton Truck Crane 270' boom, 60' jib

with 41,000 lbs. counterweight

... and over rear work areas with outriggers fully extended and set

Oper. Rad. Ft.	130 Ft. Boom			140 Ft. Boom			150 Ft. Boom			160 Ft. Boom			170 Ft. Boom			180 Ft. Boom			190 Ft. Boom			200 Ft. Boom			Oper. Rad. Ft.	
	Angle	Boom Pt. El.	Rating Lbs.	Angle	Boom Pt. El.	Rating Lbs.	Angle	Boom Pt. El.	Rating Lbs.	Angle	Boom Pt. El.	Rating Lbs.	Angle	Boom Pt. El.	Rating Lbs.	Angle	Boom Pt. El.	Rating Lbs.	Angle	Boom Pt. El.	Rating Lbs.	Angle	Boom Pt. El.	Rating Lbs.		
12																									12	
15																										15
20																										20
25																										25
30																										30
35	77	135.9	73,600	77	146.0	73,400	78	156.3	73,200																35	
40	74	133.6	60,300	75	143.9	60,000	76	154.1	59,800	77	164.6	59,600	78	174.9	59,300	79	185.3	59,000								40
45	72	132.1	50,900	73	142.4	50,700	74	152.8	50,500	75	163.1	50,200	76	173.6	50,000	77	184.1	49,800	78	194.3	50,700	79	204.1	50,500		45
50	69	130.1	43,600	71	141.1	43,400	72	151.4	43,200	73	161.6	42,900	74	172.1	42,600	75	182.6	42,400	76	193.0	43,200	77	203.4	43,000		50
60	65	128.6	33,500	67	136.6	33,200	68	147.7	32,900	69	158.0	32,700	71	169.3	32,400	72	179.7	32,200	73	190.2	32,700	74	201.1	32,500		60
70	80	121.2	27,500	62	132.2	27,300	64	143.5	27,000	66	154.6	26,700	67	165.1	26,500	68	177.8	26,300	70	187.1	26,700	71	197.8	26,400		70
80	64	114.0	22,800	57	128.1	22,300	60	138.6	22,000	62	150.1	21,800	64	161.5	21,500	65	171.7	21,300	67	183.6	21,500	68	194.1	21,300		80
90	49	108.6	18,900	52	120.0	18,800	55	131.5	18,300	58	144.2	18,100	60	155.8	17,800	62	167.6	17,600	63	178.1	17,700	65	190.1	17,500		90
100	43	97.1	16,000	47	111.0	15,800	50	124.8	15,500	53	136.3	15,200	56	148.6	14,900	58	161.1	14,700	60	173.1	14,800	61	183.6	14,500		100
110	38	84.9	13,800	41	104.3	13,500	45	114.5	13,200	49	129.3	12,900	52	142.6	12,600	54	154.1	12,400	56	166.2	12,400	58	178.2	12,100		110
120	27	67.4	11,900	34	88.2	11,700	40	104.9	11,300	44	119.7	11,100	47	133.0	10,700	50	146.5	10,600	53	160.2	10,500	55	172.5	10,200		120
130	16	41.7	10,400	28	70.7	10,100	33	90.1	9,800	38	106.8	9,550	42	122.4	9,200	46	138.1	9,050	48	152.0	8,950	51	163.9	8,650		130
140				14	43.7	8,650	25	73.2	8,500	32	93.1	8,250	37	110.9	7,900	41	126.6	7,750	44	142.2	7,600	47	165.0	7,300		140
150							14	44.4	7,400	24	73.4	7,150	31	96.1	6,800	38	114.3	6,650	40	130.5	6,450	43	148.3	6,150		150
160										13	44.1	6,200	24	77.5	5,850	30	98.4	5,700	35	117.5	5,450	39	134.6	5,150		160
170													13	46.3	5,000	23	78.7	4,850	29	102.0	4,600	34	120.3	4,300		170
180																13	48.6	4,150	22	81.5	3,850	29	105.3	3,550		180
190																			12	49.4	3,200	22	83.3	2,850		190
200																						12	49.7	2,250		200

This chart does not apply for booms equipped with a container tip or hammerhead tip section. Refer to applicable chart for ratings.

Oper. Rad. Ft.	210 Ft. Boom			220 Ft. Boom			230 Ft. Boom			240 Ft. Boom			250 Ft. Boom			Oper. Rad. Ft.
	Angle	Boom Pt. El.	Rating Lbs.	Angle	Boom Pt. El.	Rating Lbs.	Angle	Boom Pt. El.	Rating Lbs.	Angle	Boom Pt. El.	Rating Lbs.	Angle	Boom Pt. El.	Rating Lbs.	
12	60 FT. LONG AND GANTRY MUST BE IN THE INTERMEDIATE POSITION.														12	
15															15	
20	MIDPOINT SUSPENSION (CENTER HITCH) REQUIRED FOR BOOMS OVER 200 FT. LONG														20	
25															25	
30															30	
35															35	
40	BOOM LENGTHS OVER 200 FT. WITH A 35 FT. TIP SECTION REQUIRES A 2 SHEAVE POINT														40	
45															45	
50	77	213.3	42,600	78	223.7	40,500	79	234.4	38,400						50	
60	75	211.5	32,200	76	222.1	32,100	78	231.7	31,700	77	242.5	31,500	77	252.1	28,100	80
70	72	208.3	28,200	73	218.8	26,100	73	228.6	25,700	74	239.4	25,500	75	250.1	25,200	70
80	68	204.7	21,100	70	215.6	20,900	71	226.2	20,900	72	236.6	20,400	73	247.8	20,200	80
90	66	200.3	17,200	67	211.1	17,000	68	221.8	16,800	69	232.6	16,500	70	243.6	16,300	90
100	63	198.0	14,300	64	206.2	14,100	65	217.1	13,800	67	229.6	13,500	67	240.0	13,400	100
110	60	190.3	11,900	61	201.1	11,700	63	213.6	11,400	64	224.4	11,200	65	235.2	11,000	110
120	57	184.8	10,000	58	195.1	9,800	60	208.0	9,600	61	218.6	9,250	62	229.5	9,050	120
130	53	178.5	8,400	55	188.8	8,200	57	201.4	7,900	58	212.3	7,650	60	225.1	7,450	130
140	50	169.3	7,050	52	182.1	6,850	54	194.6	6,600	56	207.6	6,300	57	218.1	6,100	140
150	48	159.6	5,900	48	174.1	5,700	51	187.4	5,450	53	200.0	5,150	54	212.4	4,950	150
160	42	150.3	4,950	46	164.6	4,700	47	178.6	4,450	50	192.5	4,150	52	205.6	3,950	160
170	38	137.8	4,050	41	154.1	3,800	44	168.5	3,550	46	182.1	3,300	49	197.0	3,050	170
180	33	124.2	3,300	37	141.8	3,050	40	156.3	2,800	43	172.1	2,550	45	187.2	2,500	180
190	28	107.0	2,650	33	127.3	2,400	36	146.0	2,150						190	
200	21	85.5	2,050												200	

NOTE: OPERATION OF THIS EQUIPMENT IN EXCESS OF LOAD RATINGS AND DISREGARD OF INSTRUCTIONS VOIDS THE WARRANTY.

P&H 9125-TC 140-ton Truck Crane 270' boom, 60' jib

2 rated crane loads in pounds — main boom — without outriggers

Oper Rad Ft	Angle	50 Ft. Boom		Angle	60 Ft. Boom		Angle	70 Ft. Boom		Angle	80 Ft. Boom		Angle	90 Ft. Boom		Angle	100 Ft. Boom	
		Over Side	Over Rear		Over Side	Over Rear		Over Side	Over Rear		Over Side	Over Rear		Over Side	Over Rear		Over Side	Over Rear
12	81		75,228															
15	78		63,984	80		63,234												
20	72	41,652	50,844	75	40,994	50,156	77	40,643	49,787									
25	66	33,689	41,876	70	33,068	41,229	73	32,738	40,884	75	32,384	40,516	77	31,763	39,889	78	31,392	39,485
30	60	28,068	34,300	65	27,471	34,764	69	27,156	34,437	71	26,817	34,085	73	26,222	33,468	75	25,803	33,098
35	53	23,885	28,100	59	23,309	28,800	64	23,005	28,700	67	22,677	28,500	70	22,102	28,200	72	21,751	27,900
40	45	20,654	23,700	54	20,094	24,400	59	19,798	24,200	64	19,478	24,000	67	18,917	23,700	69	18,575	23,400
45	36	18,083	20,200	47	17,535	20,900	55	17,246	20,800	59	16,933	20,600	63	16,385	20,300	66	16,047	20,000
50	24	15,700	17,600	40	15,451	18,300	49	15,167	18,100	55	14,860	17,900	60	14,321	17,600	63	13,988	17,300
60				22	12,260	14,300	37											
70							20	9,664	11,400	35	9,371	11,100	43	8,858	10,800	49	8,536	10,500
80										19	7,608	9,100	32	7,103	8,800	41	6,785	8,500
90													17	5,722	7,250	31	5,407	6,900
100																17	4,295	5,700

WHEN USING BOOMS WITH A 25 FT TIP SECTION, 60 FT TO 130 FT LONG DEDUCT 1,000 LBS

. . . . tires at 100 p.s.i.

Oper. Rad. Ft.	Angle	110 Ft. Boom		Angle	120 Ft. Boom		Angle	130 Ft. Boom	
		Over Side	Over Rear		Over Side	Over Rear		Over Side	Over Rear
12		RATINGS SHOWN DO NOT EXCEED MAXIMUM APPROVED TIRE CAPACITY							
15									
20									
25									
30	77	25,268	32,480	78	25,126	32,335			
35	74	21,178	27,800	75	21,037	27,200	77	20,664	27,100
40	71	18,014	23,100	73	17,877	22,700	74	17,512	22,600
45	68	15,498	19,600	70	15,363	19,300	72	15,004	19,100
50	65	13,449	16,900	68	13,315	16,600	69	12,960	16,400
60	60	10,312	13,000	62	10,180	12,600	65	9,832	12,500
70	53	8,023	10,200	57	7,893	9,850	60	7,551	9,700
80	47	6,280	8,150	51	6,152	7,800	54	5,813	7,650
90	39	4,909	6,550	44	4,781	6,250	49	4,445	6,050
100	30	3,801	5,350	37	3,674	5,000	43	3,341	4,800

*Maximum travel speed with lifted load is 1.5 m.p.h.

32R202A

special over rear on rubber with 41,000 lbs. counterweight and 14,000 lbs. front bumper counterweight*

3 rated crane loads in pounds — main boom — over rear — without outriggers

OPER. RAD. FT.	ANGLE	50 FT. BOOM		ANGLE	60 FT. BOOM		ANGLE	70 FT. BOOM		ANGLE	80 FT. BOOM		ANGLE	90 FT. BOOM		ANGLE	100 FT. BOOM		OPER. RAD. FT.
		BOOM PT. EL.	RATING LBS.		BOOM PT. EL.	RATING LBS.		BOOM PT. EL.	RATING LBS.		BOOM PT. EL.	RATING LBS.		BOOM PT. EL.	RATING LBS.		BOOM PT. EL.	RATING LBS.	
12	81	58.0	110,000																12
13	80	57.8	107,400																13
15	78	57.5	96,800	80	67.6	96,200													15
17	78	57.1	83,700	78	67.3	83,100	80	77.5	82,800										17
20	72	56.2	68,400	75	66.5	68,800	77	76.6	68,500	79	87.1	68,100	80	97.2	67,500				20
25	66	54.3	53,700	70	65.1	53,100	73	75.6	52,800	75	85.8	52,400	77	96.3	51,800	78	106.5	51,500	25
30	60	52.0	43,500	65	63.1	42,900	69	74.1	42,600	71	84.2	42,200	73	94.6	41,700	75	104.2	41,400	30
35	53	48.6	36,300	58	60.1	35,800	64	71.6	35,500	67	82.2	35,100	70	83.1	34,600	72	103.8	34,200	35
40	45	44.0	31,100	54	57.1	30,500	59	66.6	30,200	64	80.6	29,900	67	91.5	29,300	69	102.1	29,000	40
45	36	37.8	27,000	47	52.5	26,400	55	66.0	26,100	59	77.2	25,800	63	88.8	25,300	66	100.1	24,900	45

37U940

P&H 9125-TC 140-ton Truck Crane 270' boom, 60' jib

PCSA CLASS 12-749

4 rated crane loads in pounds — main boom (69" w. x 69" d.) in over side . . .

Oper. Rad. Ft.	Angle	50 Ft. Boom		60 Ft. Boom		70 Ft. Boom		80 Ft. Boom		90 Ft. Boom		100 Ft. Boom		110 Ft. Boom		120 Ft. Boom		Oper. Rad. Ft.							
		Boom Pt. El.	Rating Lbs.	Boom Pt. El.	Rating Lbs.	Boom Pt. El.	Rating Lbs.	Boom Pt. El.	Rating Lbs.	Boom Pt. El.	Rating Lbs.	Boom Pt. El.	Rating Lbs.	Boom Pt. El.	Rating Lbs.	Boom Pt. El.	Rating Lbs.								
12	81	58.0	280,000															12							
15	78	67.5	220,800	80	67.8	198,000	RATINGS ABOVE HEAVY LINE ARE LIMITED BY FACTORS OTHER THAN STABILITY.										15								
20	72	66.2	174,300	75	66.8	174,000	77	76.8	168,500	RATINGS AT 20 FT. OR LESS REQUIRE USE OF A 25 FT. TIP SECTION WITH 5 SHEAVES.										20					
25	68	64.3	138,360	70	65.1	137,800	73	75.6	137,600	75	85.8	137,300	77	96.3	136,800	78	106.5	132,200	25						
30	60	52.0	114,400	65	63.1	114,700	69	74.1	114,600	71	84.2	114,500	73	94.6	114,300	75	104.2	114,100	77	115.7	113,900	78	126.0	106,600	30
35	53	48.6	90,700	59	60.1	91,000	64	71.5	90,800	67	82.2	90,700	70	93.1	90,500	72	103.8	90,300	74	114.4	90,100	75	124.4	89,800	35
40	45	44.0	74,900	54	57.1	75,200	59	68.6	75,000	64	80.6	74,900	67	91.5	74,700	69	102.1	74,500	71	112.6	74,200	73	123.4	74,000	40
45	36	37.0	63,600	47	52.5	63,800	55	66.0	63,600	59	77.2	63,400	63	88.8	63,300	66	100.1	63,000	68	110.6	62,800	70	121.4	62,500	45
50	24	28.0	55,100	40	48.2	55,400	49	61.4	55,100	55	74.1	55,000	60	86.6	54,800	63	97.7	54,600	65	108.3	54,400	68	120.0	54,100	50
60				22	30.9	43,400	37	50.6	43,100	46	66.1	43,000	52	79.6	42,800	56	91.5	42,500	60	104.0	42,300	62	114.6	42,000	60
70							20	33.4	35,100	35	54.4	35,000	43	70.0	34,800	49	84.1	34,500	53	96.4	34,300	57	109.2	34,000	70
80										19	34.4	29,200	32	58.0	29,000	41	74.1	28,700	47	89.1	28,500	51	101.6	28,100	80
80												17	35.8	25,200	31	59.9	24,900	39	77.7	24,700	44	93.3	24,400	90	
100													17	37.5	21,400	30	63.4	21,200	37	80.6	20,900	44	93.3	20,900	100
110															16	38.8	18,500	28	66.1	18,100	37	88.1	18,100	110	
120																		15	41.1	15,900				120	
130																								130	
140																								140	
150																								150	
160																								160	
170																								170	
180																								180	
190																								190	
200																								200	
WARNING:		WARNING: MAXIMUM RATING FOR 35 FT. 3 SHEAVE TIP IS 150,000 LBS.																							
WHEN BOOM IS EQUIPPED WITH JIB, MAIN HOOK RATING MUST BE REDUCED TO COMPENSATE FOR JIB ATTACHMENT WEIGHT.																									
JIB LENGTH		20 FT.	30 FT.	40 FT.	50 FT.	60 FT.																			
DEDUCT — LBS.		1,500	1,500	2,000	2,500	3,000																			

WARNING: Machine will tip over when upper is revolved over side unless outriggers are fully extended and set.

PCSA CLASS 12-834

5 rated crane loads in pounds — main boom (69" w. x 69" d.) in

OPER. RAD. FT.	ANGLE	50 FT. BOOM		60 FT. BOOM		70 FT. BOOM		80 FT. BOOM		90 FT. BOOM		100 FT. BOOM		110 FT. BOOM		OPER. RAD. FT.							
		BOOM PT. EL.	RATING LBS.	BOOM PT. EL.	RATING LBS.	BOOM PT. EL.	RATING LBS.	BOOM PT. EL.	RATING LBS.	BOOM PT. EL.	RATING LBS.	BOOM PT. EL.	RATING LBS.	BOOM PT. EL.	RATING LBS.								
12	82	58.2	280000													12							
15	72	57.7	220800	81	67.8	198000	RATINGS ABOVE HEAVY LINE ARE LIMITED BY FACTORS OTHER THAN STABILITY.										15						
20	73	56.5	174300	79	68.8	174000	78	77.1	168500	RATINGS AT 20 FT. OR LESS REQUIRE USE OF A 25 FT. TIP SECTION WITH 5 SHEAVES.										20			
25	66	54.8	138360	71	65.4	137900	73	75.6	137800	76	88.2	137300	77	96.5	136800	79	106.7	132200	25				
30	60	52.1	115000	65	63.4	114700	69	74.2	114600	72	84.8	114500	74	95.2	114300	76	105.6	114100	77	115.9	113900	30	
35	53	48.6	98000	60	60.6	97500	65	72.1	97000	68	83.0	96500	71	93.6	96000	73	104.2	95500	74	114.6	95000	35	
40	45	44.4	83400	54	57.5	83100	60	69.4	83000	64	80.8	82900	67	91.7	82800	70	102.5	82400	72	113.1	82100	40	
45	36	38.5	70900	48	53.5	70800	55	63.3	70400	60	78.1	70300	64	89.4	70000	66	100.5	69800	69	111.3	69500	45	
50	25	29.7	61500	41	49.3	61200	50	62.4	61000	58	75.0	60900	60	85.6	60600	63	96.1	60300	66	108.2	60000	50	
60				23	31.7	48100	38	51.8	47900	48	66.8	47800	55	80.0	47500	57	92.3	47200	60	104.1	46900	60	
70							21	33.5	39100	35	55.1	39000	44	70.9	38600	49	84.7	38400	54	97.5	38100	70	
80										20	35.3	32700	33	58.1	32300	41	74.8	32100	47	88.2	31700	80	
90												20	38.6	27600	33	62.6	27600	40	79.6	27500	90		
100													19	41.5	24100	31	65.4	23800	40	78.8	23800	100	
110															18	43.1	20800					110	
120																							120
WARNING:		WARNING: MAXIMUM RATING FOR 35 FT. 3 SHEAVE TIP IS 150,000 LBS.																					
WHEN BOOM IS EQUIPPED WITH JIB, MAIN HOOK RATING MUST BE REDUCED TO COMPENSATE FOR JIB ATTACHMENT WEIGHT.																							
JIB LENGTH		20 FT.	30 FT.	40 FT.	50 FT.	60 FT.																	
DEDUCT — LBS.		1500	1500	2000	2500	3000																	

P&H 9125-TC 140-ton Truck Crane 270' boom, 60' jib

with 62,000 lbs. counterweight

(ratings shown are based on a counterweight of 41,000 lbs. and 21,000 lbs. bustle counterweight)

... and over rear work areas with outriggers fully extended and set

Oper. Rad. Ft.	Angle	130 Ft. Boom		140 Ft. Boom		150 Ft. Boom		160 Ft. Boom		170 Ft. Boom		180 Ft. Boom		190 Ft. Boom		200 Ft. Boom		Oper. Rad. Ft.	
		Boom Pt. El.	Rating Lbs.	Boom Pt. El.	Rating Lbs.	Boom Pt. El.	Rating Lbs.	Boom Pt. El.	Rating Lbs.	Boom Pt. El.	Rating Lbs.	Boom Pt. El.	Rating Lbs.	Boom Pt. El.	Rating Lbs.	Boom Pt. El.	Rating Lbs.		
12																		12	
15																		15	
20																		20	
25																		25	
30																		30	
35	77	135.3	89,700	77	145.0	86,400	78	155.3	78,800									35	
40	74	133.6	73,800	75	143.9	73,600	76	154.1	73,400	77	164.6	69,400	78	174.9	64,100	79	185.3	61,300	40
45	72	132.1	62,400	73	142.4	62,100	74	152.8	61,900	75	163.1	61,600	76	173.6	60,800	77	184.1	56,400	45
50	69	130.1	54,000	71	141.1	53,700	72	151.4	53,600	73	161.8	53,200	74	172.1	53,000	75	182.6	52,300	50
55	65	126.5	41,900	67	136.6	41,700	68	147.7	41,400	69	158.0	41,100	71	169.3	40,800	72	179.7	40,600	55
60	60	121.2	33,900	62	132.2	33,800	64	143.5	33,300	66	154.6	33,000	67	165.1	32,700	69	177.6	32,500	60
65	54	114.0	28,000	57	126.1	27,400	60	138.6	27,400	62	150.1	27,400	64	161.5	27,300	65	171.7	27,300	65
70	49	106.6	24,300	52	120.0	24,000	55	131.5	23,700	58	144.2	23,500	60	155.8	23,200	62	167.6	23,000	70
75	43	97.1	20,800	47	111.0	20,600	50	124.8	20,300	53	138.3	20,000	56	149.8	19,700	58	161.1	19,500	75
80	38	84.9	18,100	41	104.3	17,800	45	114.5	17,500	49	129.3	17,200	52	142.8	16,900	54	154.1	16,800	80
85	27	87.4	15,800	34	88.2	15,800	40	104.9	15,200	44	119.7	15,000	47	133.0	14,700	50	146.5	14,500	85
90	15	41.7	14,000	26	70.7	13,700	33	90.1	13,400	38	106.8	13,100	42	122.4	12,800	46	138.1	12,600	90
95				14	43.7	12,200	25	73.2	11,800	32	93.1	11,500	37	110.9	11,200	41	126.6	11,000	95
100							14	44.4	10,500	24	73.4	10,200	31	96.1	9,850	36	114.3	9,700	100
105																			105
110																			110
115																			115
120																			120
125																			125
130																			130
135																			135
140																			140
145																			145
150																			150
155																			155
160																			160
165																			165
170																			170
175																			175
180																			180
185																			185
190																			190
200																			200

32R201

with 62,000 lbs. counterweight and 14,000 lbs. front bumper counterweight

Maximum approved travel speed with 14,000 pound front bumper counterweight installed is 5 m.p.h.

... over rear work areas with outriggers fully extended and set

ANGLE	120 FT. BOOM		130 FT. BOOM		140 FT. BOOM		150 FT. BOOM		160 FT. BOOM		170 FT. BOOM		180 FT. BOOM		OPER. FT.						
	BOOM PT. EL.	RATING LBS.	BOOM PT. EL.	RATING LBS.	BOOM PT. EL.	RATING LBS.	BOOM PT. EL.	RATING LBS.	BOOM PT. EL.	RATING LBS.	BOOM PT. EL.	RATING LBS.	BOOM PT. EL.	RATING LBS.							
															12						
															15						
															20						
															25						
															30						
78	126.1	105600													35						
78	124.9	94500	77	135.2	92100	78	145.5	85400	79	155.7	77800				40						
73	123.8	81900	74	134.0	81700	75	144.3	80800	76	154.6	74100	77	164.9	68400	78	175.1	63100	79	185.3	60300	45
71	121.9	69000	72	132.5	69100	73	142.9	68800	74	153.3	68500	75	163.7	68000	76	174.0	58900	77	184.2	54400	50
68	120.0	58800	70	130.8	59000	71	141.4	58300	72	151.9	58000	73	162.0	58700	74	172.7	57400	75	182.7	51200	55
63	115.5	46800	65	126.8	48500	67	137.8	46300	69	148.4	46000	70	159.0	45700	71	169.6	45500	72	180.2	43200	60
57	109.7	37900	60	121.4	37700	62	132.8	37400	64	144.0	37100	66	155.0	36800	68	165.9	36800	69	176.7	36300	70
51	102.5	31600	55	115.0	31400	58	127.0	31000	60	138.7	30800	62	150.2	30400	64	161.4	30200	65	172.4	29900	80
46	94.4	27500	50	108.0	27200	53	120.6	26900	56	133.1	26700	58	145.0	26400	60	156.6	26200	62	168.0	25800	90
38	83.1	23700	44	98.5	23500	48	112.5	23100	51	125.7	22900	54	138.3	22600	56	150.5	22400	58	162.3	22100	100
30	68.1	20700	37	88.5	20400	42	102.3	20100	46	116.0	19900	49	130.3	19500	52	143.3	19300	55	155.7	19100	110
18	44.8	13200	28	70.5	18000	35	89.7	17600	40	105.1	17400	45	120.9	17000	48	134.8	16900	51	148.1	16600	120
			17	66.1	15900	27	73.1	15600	34	92.8	15300	39	109.7	15000	43	124.9	14800	46	139.2	14500	130
						16	47.5	13900	26	75.4	13600	33	95.6	13300	38	113.1	13100	42	128.8	12800	140
									16	48.9	12100	26	77.7	11800	32	98.7	11600	37	116.5	11300	150
																			160		
																			170		
																			180		

32R254

